

'MACHINE LEARNING'
FIGHTS FRAUD P. 16

ANONYMOUS SHELLS
RISING P. 20

FRAUDULENT
DIAMONDS P. 28

WINNING BACK
TIPSTERS P. 44

TRUST US ... WE
WOULDN'T LIE P. 48

FRAUD

A PUBLICATION OF THE ASSOCIATION OF CERTIFIED FRAUD EXAMINERS

MAGAZINE®

VOL. 33 | NO. 3 | MAY/JUNE 2018
Fraud-Magazine.com

LONE BRAVE JOURNALIST



CLARE REWCASTLE BROWN

This reporter exposed the massive 1MDB scandal in Malaysia. Now she says democracies need strong, courageous media to help protect the public against the powerful, [p. 36.](#)

Contents

Volume 33, No. 3, May/June 2018



36 AN INTERVIEW WITH CLARE REWCASTLE BROWN

COVER STORY

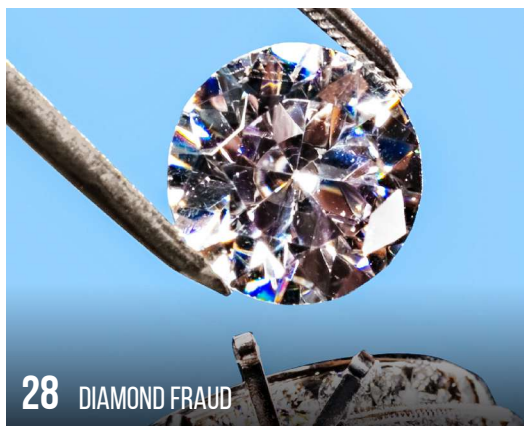
Lone brave journalist exposes 1MDB corruption

By Sarah Hofmann, CFE

Independent journalist Clare Rewcastle Brown, at the risk of her safety and without the protection of a news organization, has exposed the flow of billions of public Malaysian dollars from the government's 1MDB development fund to the country's top leaders and many others. She says democracies need strong, cynical, courageous media to help protect the public against the powerful.

36

FEATURES



28 DIAMOND FRAUD

Anonymous shell companies rising: Why organizations should be concerned about this growing threat

By Ryan C. Hubbs, CFE, CIA, CCEP

20

Fraudulent facets: Shining a light through diamond fraud

By Donn LeVie Jr., CFE

28



44 WINNING BACK TIPSTERS

Tipsters not trusting the system? Here's how to win them back

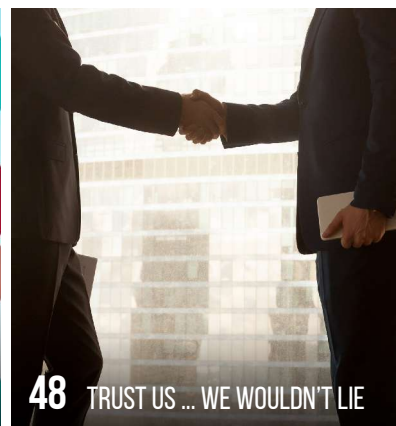
By Jonathan T. Marks, CFE, CPA

44

Trust us ... we wouldn't lie to you: Independently and objectively research every new client

By Stephen A. Pedneault, CFE

48



48 TRUST US ... WE WOULDN'T LIE

Publisher John Gill, J.D., CFE
Editor-in-chief Dick Carozza, CFE
Associate Editor Emily Primeaux, CFE
Contributing Editors
 Cora Bullock; Scott H. Patterson; Randi Zimmer, CFE
Legal Editor Ron Cresswell, J.D., CFE
Contributing Writers
 Robert Tie, CFE, CFP; Donn LeVie Jr., CFE
Art Director Helen Elliott, CFE
Designer Becky Plante
Circulation Manager Aimee Jost, CFE
Advertising Coordinator Travis Kolaja
Contact: (800) 245-3321 | tkolaja@ACFE.com

Editorial Advisory Committee
 Jonathan E. Turner, CFE, CII, chair; Emmanuel A. Appiah, MBA, CPA, CFE; Johnnie R. Bejarano, DBA, CFE, CPA, CGMA; Richard Brody, Ph.D., CFE, CPA; Jeimy J. Cano, Ph.D., CFE, CAS; Courtney Castolino, CFE, CPA, CA, CBV, CFF; Linda Chase, CPA, CFE; Franklin Davenport, CFE; David J. Clements, CFE; Ellen Fischer, CFE, CIA; Peter D. Goldmann, CFE; Robert Holtfreter, Ph.D., CFE; Robert Kardell, CFE, CPA; Thomas Cheney Lawson, CFE, CIA; Philip C. Levi, CFE, CPA, FCA; Larry Marks, CFE, CISA, PMP, CISSP, CSTE; Jimmy S. Pappas, CFE; Cecily Raiborn, Ph.D., CFE, CMA, CPA (Texas); Rob E. Shaff, CFE; Katharina Shamai, CFE, CIA, CA, IIA; Herbert Snyder, Ph.D., CFE; Scott Strain, CFE; Karen Forrest Turner, Ph.D., Educator Associate; Stéphane Vuille, CFE, PCI

2017-2018 Board of Regents
 Alexis C. Bell, CFE, PI; Sidney P. Blum, CFE, CPA, CFF; Bruce Dorris, J.D., CFE, CVA, CPA; Leah D. Lane, CFE; Jeanette LeVie, CFE; Vidya Rajarao, CFE, CA; Nancy E. Rich, CFE, MPA; John Warren, J.D., CFE

Fraud Magazine (ISSN 1553-6645) is published bimonthly by the Association of Certified Fraud Examiners, 716 West Avenue, Austin, TX 78701-2727, USA. Periodical postage paid at Austin, TX 78701 and at additional mailing offices.

Postmaster — Please send address changes to:
Fraud Magazine | ACFE Global Headquarters
 716 West Avenue | Austin, TX 78701-2727, USA
 (800) 245-3321 | +1 (512) 478-9000
 Fax: +1 (512) 478-9297

Subscriptions
 ACFE members: annual membership dues include \$45 for a regular one-year subscription; \$15 for an electronic member subscription, and \$15 for student, and retired member subscriptions. Non-member subscription rates are: \$65 in the U.S.; \$77 outside the US. Membership information can be obtained by visiting ACFE.com or by calling (800) 245-3321, or +1 (512) 478-9000. Change of address notices and subscriptions should be directed to *Fraud Magazine*. Although *Fraud Magazine* may be quoted with proper attribution, no portion of this publication may be reproduced unless written permission has been obtained from the editor. The views expressed in *Fraud Magazine* are those of the authors and might not reflect the official policies of the Association of Certified Fraud Examiners. The editors assume no responsibility for unsolicited manuscripts but will consider all submissions. Contributors' guidelines are available at Fraud-Magazine.com. *Fraud Magazine* is a double-blind, peer-reviewed publication.

To order reprints, visit Fraud-Magazine.com/reprint or email reprints@fraud-magazine.com.

© 2018 Association of Certified Fraud Examiners, Inc. "ACFE," "CFE," "Certified Fraud Examiner," "CFE Exam Prep Course," "Fraud Magazine," "Association of Certified Fraud Examiners," "Report to the Nations," the ACFE Seal, the ACFE Logo and related trademarks, names and logos are the property of the Association of Certified Fraud Examiners, Inc., and are registered and/or used in the U.S. and countries around the world.

COLUMNS & DEPARTMENTS

FROM THE PRESIDENT AND CEO
She didn't avert her eyes from 1MBD corruption
 By Bruce Dorris, J.D., CFE, CPA **3**

FRAUD IN THE NEWS
'Pharma Bro' sentencing, Theranos CEO charged and beer fraud
 Compiled by Randi Zimmer, CFE **6**

BIG FRAUDS
A case of 'Grande Frode' at BT Italy
 By Steve C. Morang, CFE, CIA, CRMA **8**



FRAUD EDGE
A practical take on fortifying anti-fraud training
 By Sandra Damijan, Ph.D., CFE **10**

FRAUD BASICS
Confronting the challenges of cross-border fraud examinations
 By Robin Singh, CFE, LPEC **12**

INNOVATION UPDATE
'Machine learning' fights fraud behind cash registers
 Edited by Vincent M. Walden, CFE, CPA **16**

GLOBAL FRAUD FOOTPRINT
Chile's anti-corruption model raises Latin American standards
 By Liseli Pennings, CFE **56**

TAKING BACK THE ID
Impersonating the good guys
 By Robert E. Holtfreter, Ph.D., CFE, CICA, CBA **62**



I'M A CFE
Pablo Santamaría Cisneros, CFE
 By Emily Primeaux, CFE **64**

ACFE NEWS **66**

CPE QUIZ **70**